



LPA-View5

Test Analysis Software

User Guide



www.mpfiltri.com

200.054-EN

Contents

Installation	4
System Requirements	4
Operating System Disk Space	
CD or USB Key Installation	4
Older Versions Required Privileges CD ROM Installation Process	
Uninstallation	5
Program Operation	7
Overview	7
Getting Help	7
Built-In Help Web-Based Help / Technical Support	
Language	8
Demonstration Data	8
Data Transfer	8
The List View	9
ID Machine Test Type Date/Time Test Ref ISO Code NAS/AS1 AS4059E-2 RH Temperature	
Test Record Selection	11
Filtering the List Sorting the List	
Printing the List	13
AS4059E Table 2	13
Combined Report	13
Views: Creation, Saving, Opening and Closing	14
Saving the View Creating a New View Closing a View Opening a Saved View Modifying a Saved View Deleting a View Multiple Views	
Data Export	16
Data Import	16
Record Deletion	17
Record Details	17
Record Details Form Printing the Record Details Form Closing the Record Details Form	
Trend Views	19
Creating a Trend View Printing a Trend View Changing the Graph Style Customised Trending Graphs Standard Graphs Exporting the Trend Graph	
Report Views	24
Overview Entering Report Data The Size Distribution Chart User Defined Reference Systems	
Printing the Test Report	29
Particle Analyser Remote Control	30
Remote Control	30
Connection of the Particle Counter Remote Device Settings	

Installation

System Requirements

Operating System

LPA-View 5 has been designed to run on Windows 2000, Windows XP, Windows Vista and Windows 7.

Disk Space

The software consumes around 10MB of hard disk space, depending on which Microsoft Windows components are already installed. We recommend that 20MB of free space should be available before installing this product.

CD or USB Key Installation

Older Versions

You are installing revision 5.xx. If you have an older installation, then this will be upgraded automatically. You do not need to uninstall it first. The first time you run the new software, any existing database will be upgraded. Your existing data will be preserved.

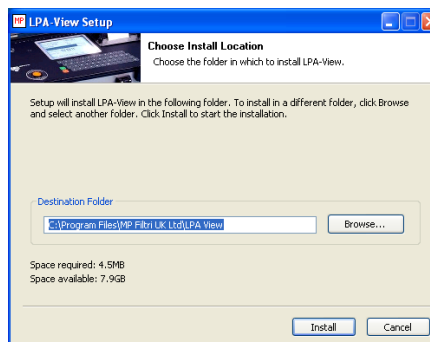
Required Privileges

Some Windows configurations require you to be logged in as a user with "Administrator" privileges in order to install software. If this is so for your system, it is also important that when you run the program for the first time after installation, you are still logged in as that user. This is because the program performs some extra installation steps the first time it is run.

During setup Windows Vista will prompt for permission to install the software components. You will need to authorise this when prompted.

CD ROM Installation Process

Insert the CDROM or USB Key containing the software. The installer should automatically run after a few seconds. If not, you can run the installer manually using the Start button: Select Start / Run... Type in "D: setup.exe" where "D" is the drive letter of your CD or USB key. For example, if your CD is drive E, you would type "E: setup.exe".



Installation Screen

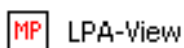
As the program is being installed on the PC, a series of messages will appear (shown emphasised below). Follow the instructions stated against each message.

Setup will install LPA-View 5 in following folder. To install in a different folder, press ``Browse`` and select another folder. Click Install to start the installation.

Completed

Depending on your system, the computer may then be restarted.

The start menu on your computer will now include a new icon, called LPA-View 5. Use this to start the application running. (Typically, select Start / Programs / LPA-View 5).



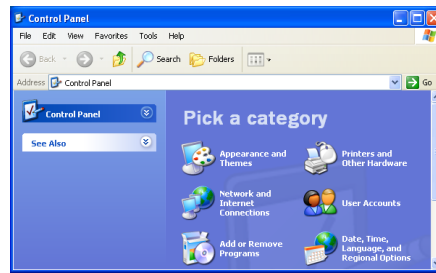
The LPA-View 5 Shortcut Icon

Uninstallation

The software can be uninstalled from the Windows Control Panel in the normal way for your system. Typically one would select Start / Control Panel.

Double-click the Add / Remove programs icon. Select "LPA-View 5" from the list of installed programs and click the Add/Remove button. The uninstaller should start up and offer to remove the LPA-View 5 software. Follow the onscreen instructions and the software will be removed.

The uninstaller does not remove the tests database, for "safety". If you want to do this you must do it manually: delete the entire software directory (e.g.



The Windows Control Panel used to uninstall the software.

C: Program Files MP Filtri UK LPA-View 5). This might be required, for example, if you have a database from a "preview release" of the software that cannot be automatically upgraded.

Program Operation

Overview

The software maintains a database of oil sample analysis results. Particle counts can be automatically uploaded from a particle counter and integrated into the database. Water content and temperature data will also be uploaded automatically from those particle counters in the MP Filtri UK range that possess this feature. Other information can be added as required to form a complete test record.

The results can be viewed in several formats, allowing the user to visually see trends, print test reports, annotate test results, and export information to other software.

The software can also be used to setup or directly control connected particle analysers.

Getting Help

Built-In Help

Online Help is available from within the program. The online help can be accessed by either:

- Pressing F1
- Using menu selection Help / Help Topics
- Pressing the Help button.



The Help Button

Web-Based Help / Technical Support

If you have an Internet connection, you can obtain further details from the World Wide Web. Select “Help / LPA-View 5 Home Page”. This will start up your web browser and display the home page for the software package.

The main MP Filtri UK corporate web site can be viewed using ``Help / MP Filtri UK Web Site``.

Language

The LPA-View 5 software can use different languages for its user interface (menus and help screens). Each time LPA-View 5 starts up, it checks which language the computer has been set to. If this is one of those supported then it is used for the user interface. Otherwise LPA-View 5 uses English.

(You can change the default language for your computer using the Windows control panel, e.g. "Regional Settings". Normal users will already have this set to their local language. This setting does potentially affect all programs, although many will appear unchanged if they only support one language.)

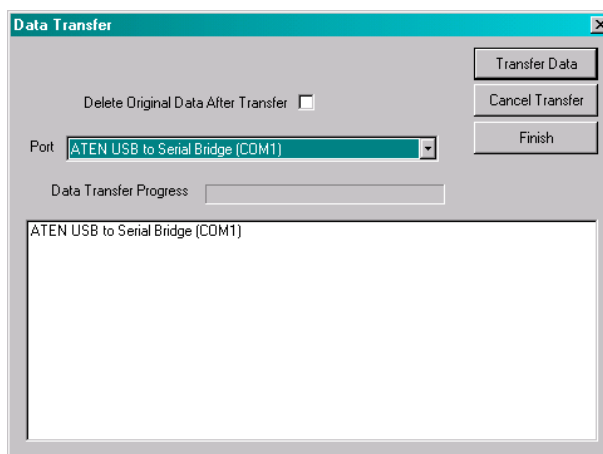
Demonstration Data

The installation software contains 60 test records for demonstration purposes, so that you may become familiar with the features and methods of manipulating the data, before uploading new test data from your particle counter.

Once you have become familiar with the application you may choose to delete the 60 demonstration test records, using one of the normal deletion processes available on Windows applications, e.g. highlight a single or group of records, then press the keyboard delete key.

Data Transfer

Note: If you are connecting a PML2/CML2 unit, please refer to the separate manual section "Particle Analyser Remote Control".



- Insert a cable connection between the RS232 port on the particle counter and the appropriate 9-way connector on the PC. (Some modern machines do not have a built-in RS232 port. For these machines USB to Serial adaptors are supplied.)
- Click on the Upload button, or select File / Upload, or use the keyboard shortcut Control-U.
- On the Data Transfer Window, which appears, select the port option, which corresponds to the actual port used on the PC when making the cable connection.
- Leave blank or tick the box next to the message ‘Delete original data after transfer’. If the box is ticked, all data stored in the connected particle counter will be automatically erased after the data has been transferred to the LPA-View 5 application. Until the user becomes familiar with the application, it is recommended that box is left blank.
- Switch on the LPA2 (green key)
- Press the Log key on LPA2 – above key 6
- Press Transfer Log on the LPA2 – key 1
- When transfer is completed, switch off the LPA2 (red key) and click Finish on the LPA2 Data Transfer Window.



The Upload button

The List View



Use the middle control to maximise the size of the program window.

The test results are initially shown as a simple list, displayed in the order in which the tests were loaded. If you cannot see enough of the list, make sure that the program window is set to its maximum size. You can double-click the title bar or use the maximise control to accomplish this.

ID	Machine	Test	Type	Time	Reference	ISO Code	NAS/AS1	AS4059E-2
260	004660	18	2	2000-05-05 10:18:00	PG KH-GT3	24/22/17	15	15A/15B/12C/12D/10E/9F
259	004660	17	2	2000-05-05 09:37:00	PG KH-GT2	24/22/17	15	15A/15B/11C/12D/10E/7F
258	004660	16	2	2000-05-05 09:02:00	PG KH-GT1	24/22/17	15	15A/15B/11C/12D/10E/7F
257	004654	42	1	2000-05-02 16:37:00	CRANE 7000/S	24/22/18	15	15A/15B/12C/12D/10E/8F
256	004654	41	1	2000-05-02 16:15:00	CRANE 7000/P	24/23/17	15	15A/15B/12C/12D/10E/8F

The titles label the various items recorded for each test. These are as follows:

ID

The database generates a number to uniquely identify each test, as the test is loaded into it. This number is used, by default, to label the test when it appears in graphs and reports. The user can never change it, and it will never be “re-used” if the test it labels is deleted. If results are sent or downloaded to another computer then the ID will not be the same.

Machine

This is the serial number of the particle analyser that performed the test.

Test

This is the test number that the particle counter assigns to the test record. It appears on an LPA2 units screen and printout. It is automatically incremented by the particle counter after each test. It can also be reset by the operator to any desired starting value, so is not guaranteed unique.

Type

The analyser unit can perform up to five types of test (see the particle counter manual for more details).

0) Normal Test

Oil is drawn into the unit in a single test cycle.

1) Dynamic Test

The test is done in 3 stages, with a delay between each test to allow the system being tested to move to a new state. The unit automatically flushes between each test to ensure that the sample is not mixed with oil from the previous cycle.

2) Triple / Bottle Sample Test

The test is done as a single test cycle, but counts are split into three stages then averaged, so that any excess variation can be detected.

3) Continuous Sampling

The analyser unit can be selected for continuous testing at set time intervals.

4) Short Test

A quicker test than the Normal Test; not recommended for oil samples cleaner than ISO 17/15/12 (NAS6).

Date/Time

The date and time at which the original test was performed, as set on the analyser. This is displayed in the ISO 8601 format. (YYYY-MM-DD HH:MM:SS).

Test Ref

This is the user settable test reference, as set on the analyser. This could be the name of the machine being tested, or the name of a customer, for example.

ISO Code

The test result, presented as a 3 number ISO 4406:1999 code.

NAS/AS1

The test result, presented as a single number NAS/AS4059E Table 1 class. Since NAS classes greater than 12 are not defined, the LPA2 laser particle analyser represents these as **. The LPA-View 5 software translates this into number 15, so that when plotted or sorted, these appear above and distinct from class 12.

AS4059E-2

The test result, presented in the AS4059E Table 2 format. LPA-View 5 now provides support for the AS4059E formats (both tables 1 and 2). The user can indicate a preference for this format (over the NAS1638 and ISO formats) by selecting "View / AS4059E Format". This provides a "hint" to the program that this is preferred. For example, this setting affects what appears in the printed list, and what the default trend graph displays.

RH

Displays the measured water content of the oil, expressed as a "Relative Humidity" percentage. The particle counter machine requires the RH measurement option.

Temperature

The oil temperature in degrees C. Machine requires the RH or T measurement option.

Test Record Selection

Filtering the List

When the program starts, the entire test database is displayed in the list view and trend graph. Since this could potentially be many thousands of test records, clearly some way is required to select just the ones of interest.

This is done using the selection boxes above the list.

ID	Machine	Test	Type	Time	Reference	ISO Code
254	004654	39	1	2000-04-26 16:18:00	ROVER RM:1	24/22/17
244	004654	32	1	2000-04-17 15:18:00	ROVER RM:1	23/21/17
234	004654	25	1	2000-03-30 14:40:00	ROVER RM:1	22/20/15
224	004654	18	1	2000-03-16 16:03:00	ROVER RM:1	23/21/16
216	004654	13	1	2000-02-14 15:15:00	ROVER RM:1	22/20/17
204	004654	4	1	2000-02-04 16:04:00	ROVER RM:1	15/13/12

Filtering the test records using a selection box.

In the example above, the user has extracted just the records with test reference equal to “ROVER RM:1”. These can then be analysed, printed, plotted etc.

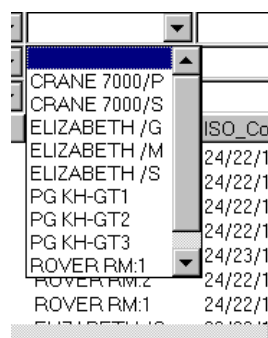
You can see that there are three rows of selection boxes. The first row, labelled by “=”, restricts the records displayed to those exactly matching the selections (as in the screen shot above).

The second row, labelled by “>,” restricts the records displayed to those whose values are greater than, or equal to, the selections. For example, it is possible to display all tests done on or after a certain date by selecting a value for “Date / Time” in this row.

The third row, labelled by “<,” restricts the records displayed to those whose values are less than, or equal to, the selections.

The restrictions all operate at the same time, so that it is possible to quickly narrow down the display to exactly the records required. For example, you could select all tests performed between two dates, for a particular customer, whose ISO code was greater than a particular value, by making the appropriate selections.

To remove a restriction, select the “blank” entry at the top of the list in the selection box.



Clear a filter by selecting the “blank” entry at the top of the drop-down list

Sorting the List

The records are initially displayed in reverse date order, such that the newest tests are at the top. By clicking on the column titles you can change the

order. Clicking the title again reverses the order. For example clicking “Date Time” will sort the records in date order, oldest first. Clicking again will re-arrange them, still in date order but newest first.

Printing the List



The Print Button

The displayed records can be printed by:

- Pressing the toolbar Print button
- Using the menu selection File / Print
- Using the keyboard shortcut Control-P

You can preview the printout by:

- Pressing the toolbar Print Preview button



The Print Preview Button

You may wish to make changes to the printer settings first, using the menu File / Print Setup.

The list can be printed with the printer in portrait or landscape mode; it will be automatically scaled to fill the width of the page.

Analysis Number	Analyser Serial Number	Test Number	Test Type	Date/Time	Reference	ISO Coding	NAS1638/AS4059E-1 Class	RH	Temperature
260	004660	18	2	2000-05-05 10:18:00	PG KH-GT3	24/22/17	15		
259	004660	17	2	2000-05-05 09:37:00	PG KH-GT2	24/22/17	15		
258	004660	16	2	2000-05-05 09:02:00	PG KH-GT1	24/22/17	15		
257	004654	42	1	2000-05-02 16:37:00	CRANE 7000/S	24/22/18	15		

The Print Preview Screen

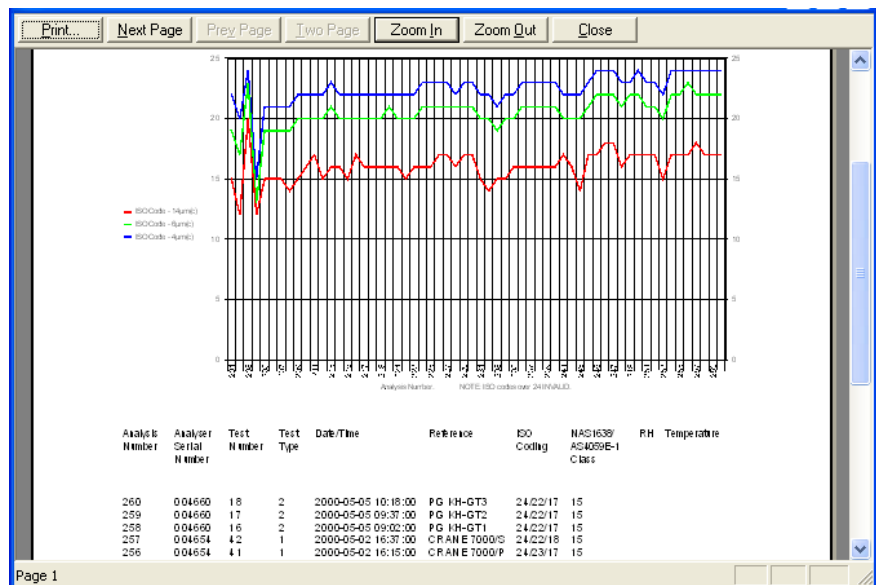
Ensure that you have narrowed down the record selection before printing; otherwise you may use up a lot of paper. Use Print Preview to check this prior to actually printing out. You can move backwards and forwards through the pages of the report, and select which ones you want printed using the Print... button.

AS4059E Table 2

On the View menu you will see an option “Format AS4059E Table 2”. This is used to modify the list view printout to show the test results in this format, rather than the default ISO4406 and NAS1638. It also changes the default trend graph for new views, showing the AS4059E Table 2 codes instead of ISO4406.

Combined Report

If you have a trend graph displayed too (See details on [page 19](#)), this can also be printed, along with the list, as a combined report.



There are 3 possibilities.

- To print the graph only, click on the graph to select it, and then print.
- To print a combined report, click on the list first to select it, and then print.
- To print only the list, remove the graph first.

It is also possible to set up the printer in landscape mode, rather than portrait. In this case the trend graph will occupy the entire first sheet, with the list being printed on the following pages.

Views: Creation, Saving, Opening and Closing

Saving the View

When the List View has been customised, by setting filter criteria and changing the sort order, these changes can be saved to disk as a “view” of the data, so that the same view can be recalled later. To do this either:



The Save button

- Use the toolbar Save button
- Use the menu selection File / Save
- Use the keyboard shortcut Control-S

Enter the filename of your choice and click the Save button.

It is important to realise that you are not saving the records themselves, only a collection of settings filtering your “view” of the underlying database. (If you do want to save the data itself, for example so you can email it, use the import/export facilities described below).

For example, you could define a “View” for each month of the year, or for each customer, or for each type of test, by setting the appropriate filters.

The View also stores any customised graph and report settings.

Creating a New View

The system will automatically open a new view for you upon start-up. If you subsequently save and close it, you can create a new view using either the:



The New button

- New Toolbar button
- Menu selection File / New
- Keyboard shortcut Control-N

The new view is “blank”, i.e. free of any customisations, so that all records are initially displayed.

Closing a View

Before opening a previously saved view, you will generally close the current one, although this is not always the case (see Multiple Views). To close a view, use the menu selection File / Close.

Opening a Saved View



The Open button

To restore a previously saved view use either:

- The Toolbar Open button
- Menu selection File / Open
- Keyboard shortcut Control-O

Browse for a previously saved View, select it and press Open.

Modifying a Saved View

If a saved view is subsequently modified, use File / Save As to select a new name when you save it, unless you wish to overwrite the original view.

Deleting a View

There is no special facility built in to the software for deleting a view, however this can be done using normal Windows techniques. For example, in the File / Open dialogue, right click a view and select delete.

Multiple Views

Although the program starts up with a single View filling the program window, it is possible to see two or more views at once. (The program has an MDI "multiple document interface"). If you are familiar with the operation of MDI programs, you can easily open several Views at once and use the commands on the Window menu to arrange them all. This might be useful, for example, to see the results from two different customers side by side.

Data Export

All test records are stored in the test database. However, test records can also be saved to separate data files using the Data Export facility.

A recipient can then import them into their own copy of LPA-View 5. The file format is CSV (comma separated variable), which means that the data can also be read into other programs such as spreadsheet or database software.



The Export Button

To export a data file, first set the View to show the test records that you wish to export (otherwise you will export all records). Then select File / Export Data or the Export button. The "Save As" dialogue will appear. You can choose to save as type "Data Files (*.lp2)" or "Excel/Spreadsheet Type (*.csv)". These are both the same, except for the file extension. A ".lp2" file will be opened by LPA-View 5 if the recipient double-clicks it (if LPA-View 5 is installed). A ".csv" file will typically be opened by Microsoft Excel, if installed.

You can email a data file by attaching it to an email message. As a shortcut, you can select "File" / "Send Data" which will open a new email message with the data file already attached. Note that this is different from "File" / "Send View". A "View" is basically a saved set of filters and graph settings, that does not contain any test records. It just defines a particular "view" of the database. A "Data File" contains actual test records, which can be sent to another user.

Data Import



The Import Button

An exported file can subsequently be imported into LPA-View 5. (Either the same installation, or an installation on another machine). From within LPA-View 5 use File / Import Data or the Import button.

From outside of LPA-View 5, double-clicking the data file should bring up LPA-View 5 (if installed) and import the data.

During data import, records that match those already in the database are ignored. Matching is done by looking at the machine serial number and date/time fields. This prevents duplication of records within the database.

Records that are imported successfully are assigned a new Test ID. This ensures that the test ID is unique within the database.

Record Deletion

WARNING: RECORD DELETION IS PERMANENT

Record deletion is accomplished by highlighting the record(s) to be deleted, then pressing the keyboard Delete key. Records can be highlighted using the normal Windows techniques, for example:

- Click on a single record to highlight it.
- Click and drag the mouse to highlight a range of records. (You have to make the click in the region to the right of the last column for this to work).
- Hold the control key down and click individual records to select multiple records that are not in a single range.

Once the desired records are highlighted, either

- Press the Delete key
- Press the toolbar delete button
- Use the menu selection Record / Delete
- Right click the selection and select Delete.



The Record Delete Button

Record Details

Detailed particle counts can be viewed for a record by highlighting it, then bringing up the record details in one of the following ways:

- Double-click the record
- The toolbar “record details” button
- Right click the selection and select “record details”
- Using the menu selection Record / Details

This will bring up the Record Details Form



The Record Details Button

Record Details Form

The screenshot shows a software window titled "Test Record Details". On the left, there are input fields for ID (207), Serial Number (004654), Test Number (7), Date (07/02/2000 19:26:00), Test Reference (CRANE 7000/S), ISO 4406 Code (21/19/15), NAS1638/AS4059E-1 (11), RH%, and Temperature deg. C. A "Print..." button is also present. On the right, there are two tables. The top table, titled "ISO Counts / 100ml", shows particle counts for various sizes (4 to 70 µm(c)) across Average, Stage 1, Stage 2, and Stage 3. The bottom table, titled "NAS1638/AS4059E-1 Counts / 100ml", shows counts for different size ranges (6-14 to >70 µm) across Average, Stage 1, Stage 2, and Stage 3. Below the tables are two smaller tables for "NAS1638/µm Classes" and "AS4059E-2 Classes".

The Test Record Details form – shows detailed particle count information

You should generally edit the Test Reference, if required, so that all tests done on the same hydraulic system have the same reference.

The top left hand region contains the same information presented in the list view, but also allows editing of the date and the test reference.

The right hand region displays the particle count for each particle size, for each stage of the test. The average of all three test stages is also displayed. If the test was only a single stage, only the “Average” is shown.

		ISO Counts / 100ml			
		Average	Stage 1	Stage 2	Stage 3
4 µm(c)		1366659	1221514	1468038	1410426
6 µm(c)		441495	376866	492089	455532
14 µm(c)		26278	26868	24673	27293
21 µm(c)		7681	8142	6726	8177
25 µm(c)		4165	4177	3752	4566
38 µm(c)		648	743	566	637
50 µm(c)		129	212	70	106
70 µm(c)		0	0	0	0

Detailed Counts

Similarly, NAS1638/AS4059E-1 Counts are also displayed towards the bottom right of the form:

		NAS1638/AS4059E-1 Counts / 100ml			
AS4059E-1	NAS1638	Average	Stage 1	Stage 2	Stage 3
6-14 µm(c)	5-15 µm	415217	349998	467416	428239
14-21 µm(c)	15-25 µm	18597	18726	17947	19116
21-38 µm(c)	25-50 µm	7033	7399	6160	7540
38-70 µm(c)	50-100 µm	648	743	566	637
>70 µm(c)	100+ µm	0	0	0	0

The individual NAS/AS4059E-1 classes for the five NAS/AS409E-1 size ranges are calculated separately, and appear at the mid left of the form:

NAS1638/AS4059E-1 Classes					
NAS1638/ μm	5-15	15-25	25-50	50-100	100+
AS4059E1/ $\mu\text{m}(c)$	6-14	14-21	21-38	38-70	>70
Class	11	9	10	9	0

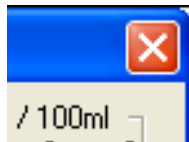
Finally the AS4059E Table 2 individual size classes are shown at the bottom left.

AS4059E-2 Classes					
12A/12B/9C/9D/5E/0F					



Printing the Record Details Form

The form has its own print button, in case you wish to print its contents.



The form close control

Closing the Record Details Form

To close the form, press Esc or click the forms close control . However, you can also leave the form open and click on other records to examine them, too. You can then use the arrow keys to move up and down the list, displaying the detailed counts as you go.

Trend Views

Creating a Trend View

To create a view of trend information, first narrow down the range of records displayed so that only the ones of interest are in the list. Then, either:



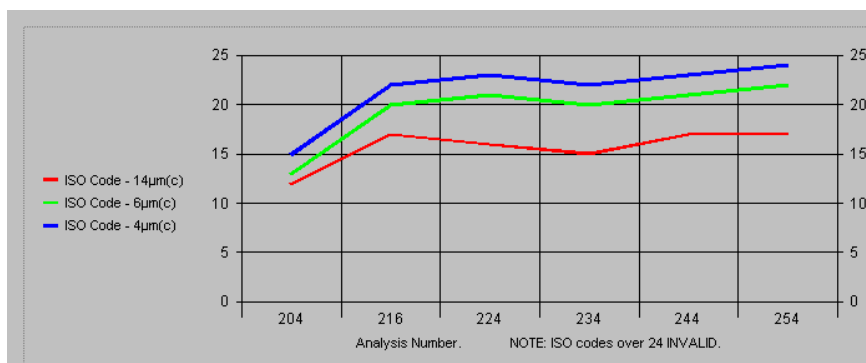
The Trend Graphs Button

- Select the Trend Graphs button on the toolbar
- Select View / Trend Graph from the menu
- Use the ALT-6 keyboard shortcut
- Right click one of the records and select ``Trend Graph`` from the popup context menu.

This will display a default Trend Graph, similar to that shown below. To remove the graph, press the button again.

Use the mouse to maximise the program window, and adjust the splitter between the top and bottom panes, to make the graph the optimum size.

The default graph plots a line for each of the 3 ISO codes (4, 6 and 14 $\mu\text{m}(C)$). The test ID is shown along the bottom (on the x-axis). The ISO code number is shown along the sides (the y-axis).



A basic trend view showing 4, 6 and 14-micron particle counts for a group of 6 tests

The records plotted follow the selection criteria of the list view. By changing the selection criteria in the list view, the records that are plotted also change.

Printing a Trend View



The Print Button

The trend graph can be printed. Select the graph (by clicking on it), then press the Print or Print Preview buttons as required. You can set the printer to portrait or landscape mode prior to this using menu selection ``File / Print Setup''.



The Print Preview Button

The Graph is scaled to take up the top half of a page in portrait mode, or the full page in landscape mode.

Changing the Graph Style

The program supports several graph styles in several combinations.

The basic styles are:

3D Effect

Use menu selection Graph / 3D Effect to switch this on and off.

(The 3D viewing angle can be adjusted by control-dragging the graph, i.e. hold the control key down and drag the graph with the mouse.)

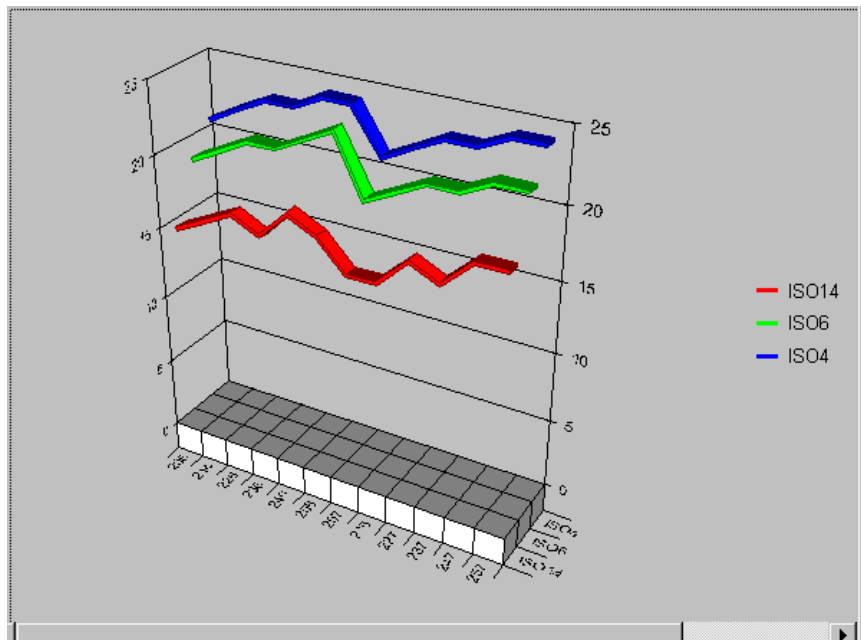
Area Chart

Use menu selection Graph / Area to switch this on and off.

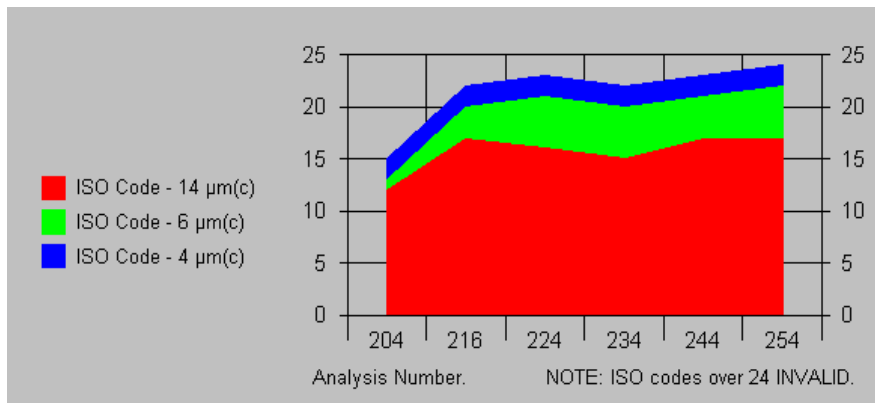
Bar Graphs

Combined Styles

It is possible, though not always useful, to use these styles in any combination...



3D Effect



Area Effect

Customised Trending Graphs

A feature of LPA-View 5 is the ability to customise this trend graph, and to save these customisations, as part of the View.

To change the graph properties, bring up the Graph Properties dialogue box by selecting either:

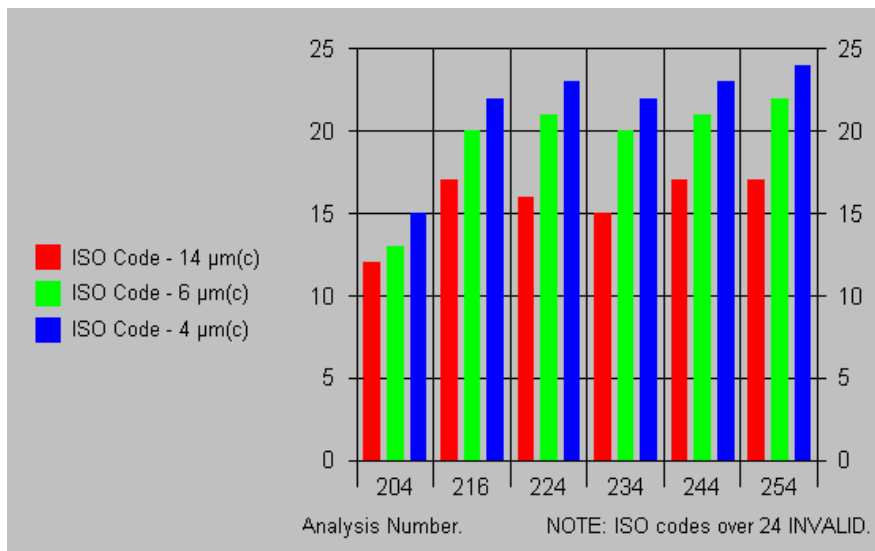


The Graph Properties Button

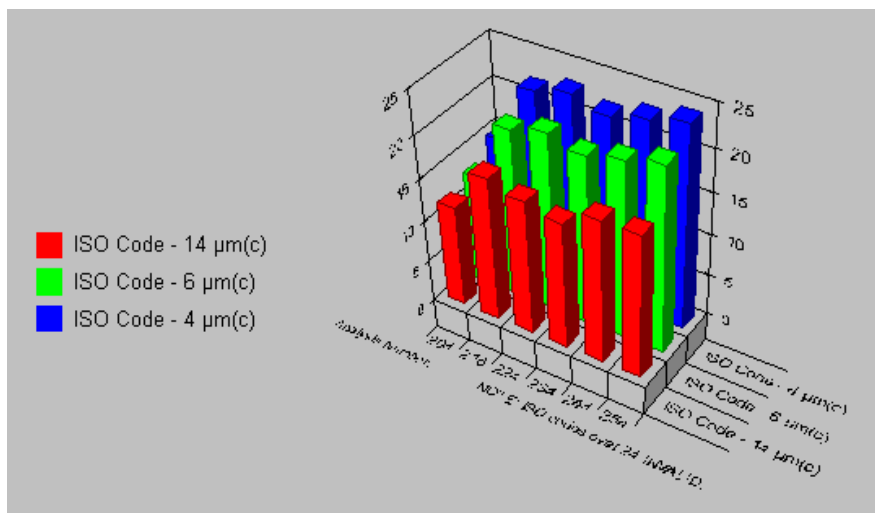
- The toolbar Graph Properties button
- Menu Graph / Properties
- Keyboard shortcut Control-G

Standard Graphs

You can select a "Standard Graph". This allows you to choose from a selection of predefined graphs.



Bar Chart Style



3D + Bar Graph styles applied together

X Axis

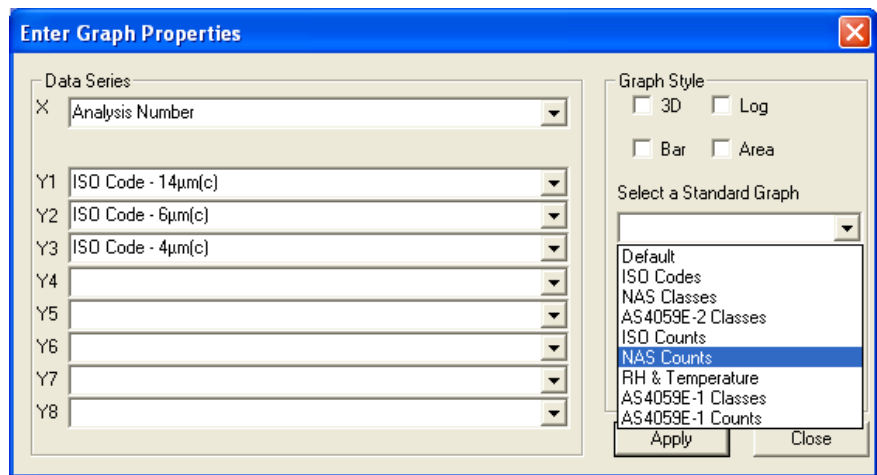
The selection box labelled X dictates what labels are used, on the x-axis, to identify each test. For example, selecting Date / Time labels the tests by date and time.

Y1..Y8

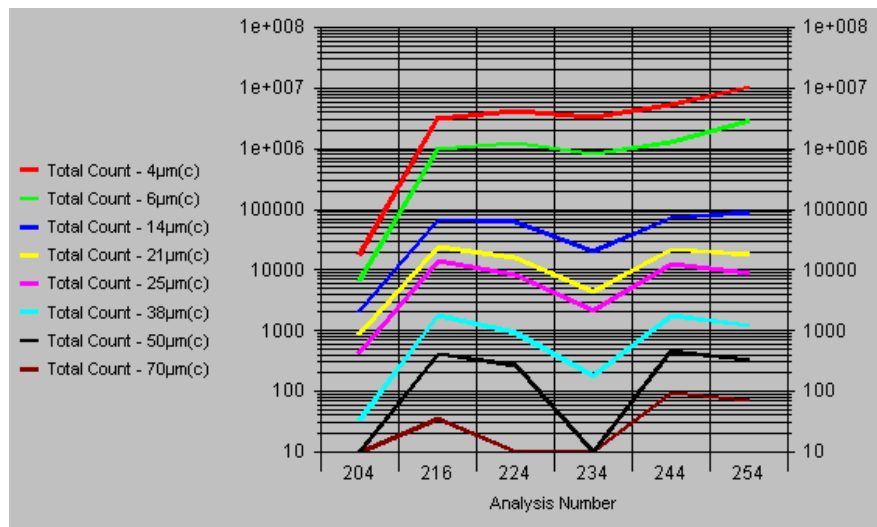
These select what is actually plotted, for each line on the chart. The default is to plot the numbers of the ISO code, but any parameter at all can also be plotted. For example, the particle counts can be plotted directly, for all 8 sizes counted.

Graph Styles

The graph styles have already been described, apart from the Log style. This is used to make the Y-axis logarithmic, allowing a far wider range of values to be plotted.



The Graph Properties dialogue



Plot showing all particle sizes counted, with the counts on a logarithmic scale

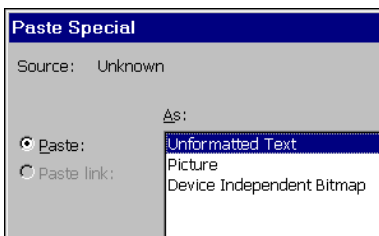
Exporting the Trend Graph

The trend graph, or its data values, can easily be exported to other Windows applications such as Microsoft Word, Excel etc, so that it can be included in user documents. To do this, click on the graph to select it, then either:

- Press the toolbar Copy button
- Use the menu selection Graph / Copy
- Use the keyboard shortcut Control-C

This will copy the graph to the Windows Clipboard.

Then, switch to or start up the application of your choice. In this other application, select Edit / Paste Special. Typically three formats will be offered:



A Typical Paste/Special dialogue

- Unformatted Text – pastes the data values used to make up the graph. Typically used when you wish to paste the data into a spreadsheet for further analysis. (Although a better way would probably be to use the general data export facility: File/Export Data/Save As Type "*.csv").
- Picture – Pastes the graph as a “Picture” (technically a Windows metafile; a “vector” format good for high quality printing). Typically used when pasting into a word processor or a drawing package
- Device Independent Bitmap – Pastes the graph as a “Bitmap”. This is a lower quality “raster” format but is supported by a wider range of programs.

Report Views

Overview

As well as trend analysis capabilities, LPA-View 5 has facilities to aid in the analysis of individual test samples. This part of the software was primarily designed for use in the context of bottle sample testing. Online forms are provided for recording the results of other testing, as well as the particle counter test data. Items recorded are:

- Test ID
- Analyser Serial Number
- Test Number
- Test Reference
- Test Type
- Date & Time Of Test
- ISO Code
- NAS / AS4059E Table 1 / AS4059E Table 2 Classes
- Temperature (if measured by particle counter)
- Water Content/RH (if measured by particle counter)
- Sample Volume
- Individual Particle Counts At The 4, 6, 14, 21, 25, 38, 50 And 70 μm (C) Sizes.
- Individual Stage Counts For The Three Test Stages, Before Averaging.
- Customer Name
- Fluid Description
- Tank Volume
- Fluid Working Hours
- Viscosity Specification
- Sample Method
- Sample Date
- Analysis Requested
- Water Content
- Filterability Factor
- Measured Viscosity
- Temperature (if entered manually)

- TAN
- Contaminating Material Types
- Reasons For Counting Failure
- Reference System Type
- Notes

These items are automatically recorded where provided by the particle counter test, or can be manually entered otherwise. Together they comprise a test record. A test record is created by performing a particle counter test, then manually entering the results of any other testing using the built in online forms provided. The test record can then be printed out as a 3 page test report, with spaces provided to attach any photography and membrane.

The test result can be compared to a variety of “reference systems” with predefined contamination levels, so that users or customers can quickly see if their system is within specification.

All test record data is also available for trend analysis, so that it is possible to produce trend graphs showing any of the recorded variables. For example, it would be possible to show graphs of viscosity and temperature, against sample date, for a particular customer.

Entering Report Data

Once the particle counting test(s) have been done, they can be uploaded into the database to create the initial test record(s). Alternatively, (if no particle counting is required) it is possible to create an empty record using Record / Create Empty.

Test data (apart from particle counts) can then be manually entered using a series of on-screen forms.

Form 1



Form 1 Button

Select the record to be amended, then either

- Press the “Test Report Sheet 1” toolbar button
- Use menu selection View / Report Sheet 1
- Use the keyboard shortcut ALT+1

Customer Supplied Data	
TestID	202
Customer	Ford
Fluid Brand & Type	Minerva 1201
Volume of Tank	200 litres
Kinematic Viscosity	20 cSt @ 40 degrees C
Fluid Working Time	1200 Hours
Contamination Limit	NAS 13
Sample Method	Static RP95H - Tank
Sample Date	2000/05/19

Record Details Form 1

This form is used to enter data as supplied by the end-user, as shown.

Form 2

Either:



Form 2 Button

- Press the “Test Report Sheet 2” toolbar button
- Use menu selection View / Report Sheet 2
- Use the keyboard shortcut ALT+2

Test ID 202		Results	
Required	ISO Code	20/17/12	
Automatic Particle Counting <input checked="" type="checkbox"/>	NAS/AS4059E-1	9	
	AS4059E-2	10A/9B/7C/7E/0F	
Water Content <input checked="" type="checkbox"/>	23	ppm	Notes:
Filterability <input checked="" type="checkbox"/>	34		
Membrane <input checked="" type="checkbox"/>			
Photography <input checked="" type="checkbox"/>			
Viscosity <input checked="" type="checkbox"/>	54	cSt @ 35 degrees C	
TAN <input checked="" type="checkbox"/>	23	mg KOH/g	

Record Details Form 2

This form is used to enter which tests have been performed, and the main test results.

Form 3

This form displays the particle counts, and allows entry of some remaining test results.



Form 3 Button

- Press the “Test Report Sheet 3” toolbar button
- Use menu selection View / Report Sheet 3
- Use the keyboard shortcut ALT+3

Form 4

Either:



Form 4 Button

- Press the “Test Report Sheet 4” toolbar button
- Use menu selection View / Report Sheet 4
- Use the keyboard shortcut ALT+4

This form allows entry of the type of contamination, found by microscopy.

Test ID 202	AS4059E-1	NAS1638	/100ml
ISO Counts per 100ml	6-14 $\mu\text{m(c)}$	5-15 μm	99794
4 $\mu\text{m(c)}$	14-21 $\mu\text{m(c)}$	15-25 μm	2700
6 $\mu\text{m(c)}$	21-38 $\mu\text{m(c)}$	25-50 μm	730
14 $\mu\text{m(c)}$	38-70 $\mu\text{m(c)}$	50-100 μm	132
21 $\mu\text{m(c)}$	>70 $\mu\text{m(c)}$	100+ μm	0
25 $\mu\text{m(c)}$			
38 $\mu\text{m(c)}$			
50 $\mu\text{m(c)}$			
70 $\mu\text{m(c)}$			

Filterability	
Filtered Volume	<input type="text"/> ml
Time Of Filtration	<input type="text" value="0"/> mins
Membrane Area	<input type="text"/> cm2
Filterability Factor	<input type="text" value="34"/>
Filterability Index	<input type="text"/>

Counting Invalid Because Of:

Record Details Form 3

Test ID 201

Membrane Test Results

Type of Contamination		Membrane Diameter	<input type="text"/> mm
<input type="text"/>	% Light Metal	Membrane Test Volume	<input type="text"/> ml
<input type="text"/>	% Dark Metal	Pore Size	<input type="text"/> μm
<input type="text"/>	% Yellow Metal		
<input type="text"/>	% Silica		
<input type="text"/>	% Rubbers / Plastics		
<input type="text"/>	% Fibres		
<input type="text"/>	% Other - See Notes		

Record Details Form 4

The Size Distribution Chart

The final report screen displays a graph of particle count against particle size. Either:



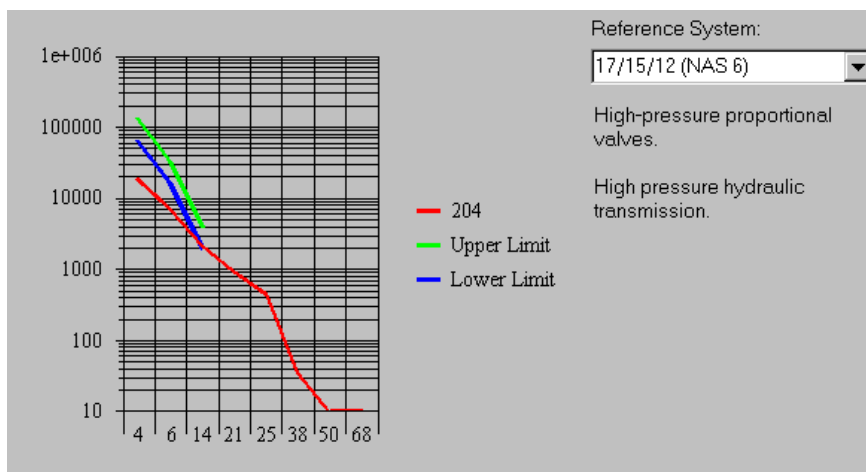
Size Distribution Graph Button

- Press the Size Distribution Graph toolbar button
- Use menu selection View / Size Distribution
- Use keyboard shortcut ALT+5

This will bring up the size distribution graph screen.

This screen allows the user to select a reference system that can be used to compare the test result to.

The graph shows the actual test results (red line) and the reference system (green and blue lines). The particle size is shown along the bottom (x-axis)



and the count per 100ml along the side (y axis). The upper and lower limits refer to the upper and lower limits of the associated ISO code.

(The printed version of this graph is more detailed, as can be seen by selecting print preview).

User Defined Reference Systems

It is also possible for the user to define the characteristics of their own “reference systems”. To do this, select Tools / Edit Reference Data. The following dialogue will appear:

ID	3	Explanation	High-pressure proportional valves.						
Description	High pressure hydraulic transmission.								
	17/15/12 (NAS 6)								
$\mu\text{m(c)}$	4	6	14	21	25	38	50	70	
Count	64000	16000	2000	-1	-1	-1	-1	-1	
Upper Limit	130000	32000	4000	-1	-1	-1	-1	-1	
Move									
<input type="button" value="Enter >"/> <input type="button" value="<<"/> <input type="button" value="<"/> <input type="button" value=">"/> <input type="button" value=">>"/>									



Record Navigation Keys

This form is used to display / edit existing definitions, and to add new ones. Use the navigation keys to select the record that you wish to alter. We suggest that you leave the predefined records alone and use one of the “UN-USED” records. Enter the ISO coding, or other short description, in the “Description” field. Enter a more detailed explanation in the “Explanation” field. Enter the corresponding particle counts, per 100ml, in the “Count” and “Upper Limit” boxes. Enter a value of -1 where there is no count value defined.

You can use the existing predefined entries as a guide for creating your own customised ones.

Press the Enter button on the form when finished. Your new entry will now be available for selection as a reference system.

Printing the Test Report

When all required results have been entered, the report can be printed.



The Print Button

The displayed record can be printed by:

- Pressing the toolbar Print button
- Using the menu selection File / Print
- Using the keyboard shortcut Control-P



The Print Preview Button

You can preview the printout by:

- Pressing the toolbar Print Preview button

You may wish to make changes to the printer settings first, using the menu File / Print Setup.

Particle Analyser

Remote Control

Remote Control

Some particle counter models support remote control operation. This section describes the LPA-View 5 features that support this mode of operation.

Customers may typically wish to use the remote control facility in one of two ways:

1. Direct online operation.

The particle counter is permanently connected to a computer running LPA-View 5 during all oil testing. The operator can set the test parameters, initiate the test, monitor the progress of each test, and download each test as it is completed.

2. Disconnected operation.

The particle counter operates autonomously, performing tests on a schedule or under external command from a control system. Occasionally the operator connects a computer and uses LPA-View 5 to download the accumulated test data.

It is also possible for customers to write their own software to remotely control a particle counter.

Connection of the Particle Counter

The particle counter will usually be connected via RS232.

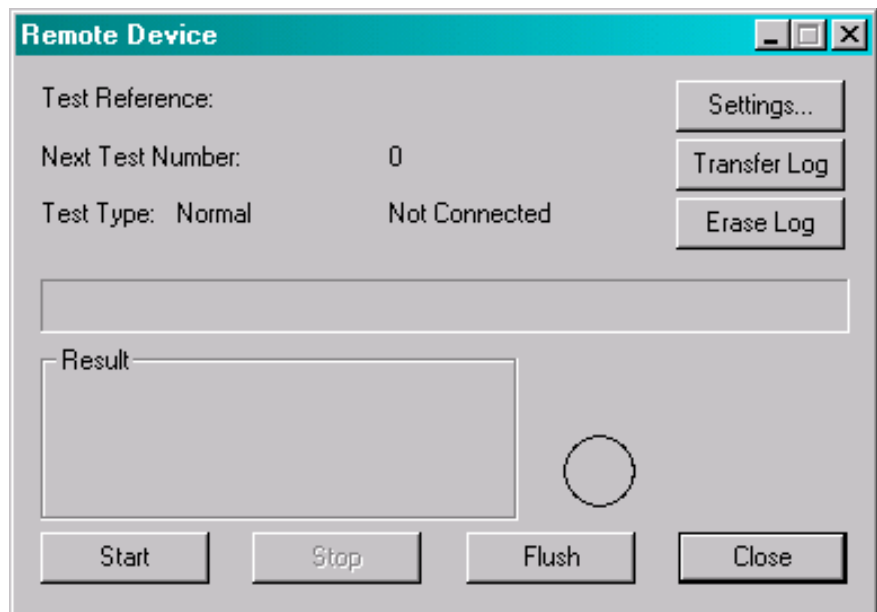
Make the connection then apply power to the particle counter. You can then bring up the Remote Device dialogue by selecting Tools / Remote Control or the Remote Control button .



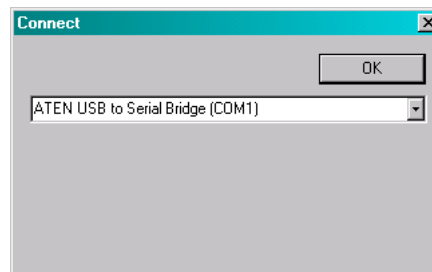
The Remote Control Button

The first time you do this, you will need to choose the correct communications port (COM port). The program scans your machine for available ports, and puts them into a list for you to choose from. Choose the port corresponding to your connection and press "Connect". When you have chosen the correct port, the dialogue should be updated showing the remote device values.

The program will remember this selection the next time you use it.



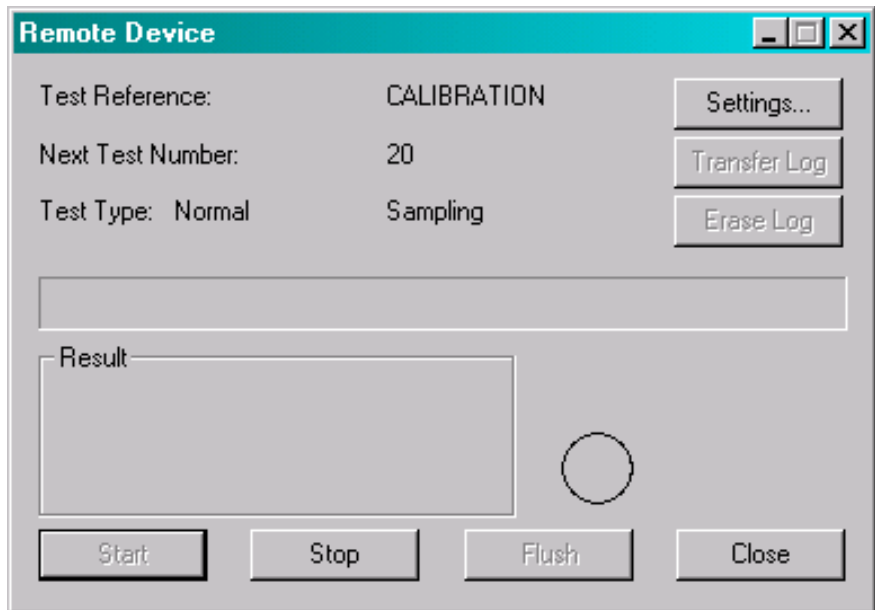
The Remote Device dialogue



The Connect dialogue

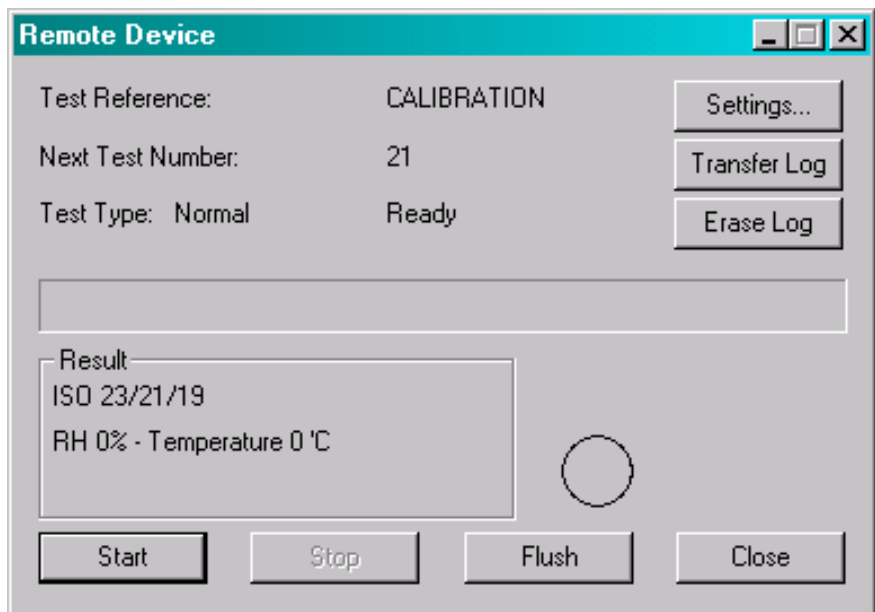
The Start, Stop and Flush buttons can be used to initiate and control a test. They work in the same way as the equivalent physical buttons or signals on the remote display unit (optional). There are more details in the manual for the particle analyser, but a basic description would be:

- Ensure oil pressure is present at the device inlet port
- Ensure the device outlet port is connected to waste
- Press the "Flush" button
- The "Flush" indicator will turn yellow, indicating flushing is in progress. (The purpose of the flush is to remove any traces of oil left from the previous test, so that these do not affect the results of the current test.)
- Continue flushing for the desired period (see particle analyser manual).
- Press the "Stop" button to stop flushing. This indicator will "go out" (turn grey).
- Press "Start".
- The dialogue will show the progress of the test as shown below.



A Test in Progress

- After the test is complete, the dialogue will indicate "Ready" and the results will be displayed.



A Completed Test

On each completion, each test is automatically downloaded into the test results database. This allows the user to set up a continuously updated trend graph and list view. As each test is completed, the trend graph is then updated).

In general it is not necessary to keep the Remote Device dialogue open and connected after the test has been initiated, although most users will find this more convenient. This fact is especially useful for the continuous test mode, when a test sequence might be programmed to take several hours.

In this case the Transfer Log button will transfer the complete result log of the remote device into the tests database.

Once the log has been transferred successfully, it can be erased by pressing the "Erase Log" button. This will stop the device memory from filling up with test results and will speed up subsequent transfers.

Remote Device Settings

Press the "Settings" button to examine the settings currently stored on the remote device.

Remote Device Settings dialogue

After making any changes, pressing the OK button will update the remote device with the new settings. Or press Cancel to leave the settings as they were.

The function of these settings should be described in the manual for the remote device. They are also described briefly here.

- "Test Reference" Use this to describe the tests.
- "Test Type" Select one of the five available test types.
- "Test Number" – Automatically increments each test. Can be reset by operator.
- "Current Time" – The time set on the remote device. Pressing the "Set" button synchronises the remote time with the PC clock.
- "Identification" The serial number and software revision level of the connected device. This is recorded in each test result. (The serial number, together with the test timestamp, uniquely identify the test record. These two parameters are used to avoid duplication of test records.)
- "Measure Water Content" Some particle counters have an option to measure the water content (RH) and temperature. Selecting this will result in this measurement being made (if the option is fitted). The particle counter will automatically perform flushing prior to the measurement

in order to ensure that the RH and temperature is representative of the oil in the system.

- "Simulate Test Results" This is useful for checking device communications and familiarisation with the software, especially when an oil supply is not available. When a simulated test is performed, the particle counter will generate test results without operating the hydraulic devices.
- "Alarm Mode" This controls the function of the alarm relays in the remote device. Refer to the device manual for details of the available modes.
- "Format" Chooses the format (ISO, NAS 1638, AS4059E Table 1 or AS4059E Table 2). This mainly affects which alarm level format (see below) controls the alarm thresholds. This also sets the local display format on the connected device.

Continuous Test Mode

If this test type is selected, then the particle counter will perform the test periodically without operator intervention. (The particle counter does not need to stay connected to LPA-View 5 in this mode).

Clean Alarm Level	
ISO	0
AS4059E-2	0A/0B/0C/0D/0E/0F
NAS1638/AS4059E-1	0

- "Clean Alarm Level"

The particle counter will continue testing until this cleanliness target is reached. The user can enter the target using either the ISO (e.g. 11/12/13), NAS1638/AS4059E-1 (e.g. 2) or AS4059E-2 (e.g. A11/B12/C13) formats. The controlling entry is that selected in the "Format" setting described above.

A target selection of "0" in the controlling Cleanliness Target entry is special. This indicates to the particle counter that tests are to continue indefinitely, without stopping at a programmed target value. This would typically be used where the particle counter is permanently connected to the machine it is monitoring.

- "Dirty Alarm Level"

This is used in conjunction with special alarm mode settings. See the manual for the connected device for details.

- "Log All Test Results"

In general, all test results are logged within the memory of the particle counter. These can then be downloaded into LPA-View 5 as already described, even if the device is not connected during the testing. However,

in continuous test, only the final test result is logged. Turning on this setting removes this restriction, so that all test results are logged even in continuous mode.

- "Confirm Target Level"

If set, in continuous test mode, the particle counter requires two consecutive results cleaner than the target before stopping the test sequence.

- "Test Interval (Minutes)"

The counter will wait in between tests for the set value.

Produced by MP Filtri UK

Revision 0.7

As a policy of continual improvement, MP Filtri UK reserve the right to alter specifications without prior notice.

Except as permitted by such licence, no part of this publication may be reproduced, stored in retrieval system or transmitted, in any form or any means, electronic, mechanical, recording, or otherwise, without prior written permission of MP Filtri UK.

MP FILTRI UK Limited,
Bourton Industrial Park,
Bourton-on-the-Water,
GL54 2HQ, U.K.

Tel: +44.1451-822522
Fax: +44.1451-822282
Email: sales@mpfiltri.co.uk
Website: www.mpfiltri.co.uk

www.mpfiltri.co.uk

ITALY - HEADQUARTERS

MP FILTRI S.p.A.
Tel: +39.02/95703.1
Fax: +39.02/95741497-95740188
Email: sales@mpfiltri.com
Website: www.mpfiltri.com

CANADA

MP FILTRI CANADA INC.
Tel: +1.905-303-1369
Fax: +1.905-303-7256
Email: mail@mpfiltricanada.com
Website: www.mpfiltricanada.com

CHINA

MP FILTRI (Shanghai) Co Ltd
Tel: +86.21-58919916
Fax: + 86.21-58919667
Email: sales@mpfiltrishanghai.com
Website: www.mpfiltrichina.com

GERMANY

MP FILTRI D GmbH
Tel: +49.6894-95652-0
Fax: + 49.6894-95652-20
Email: service@mpfiltri.de
Website: www.mpfiltri.de

FRANCE

MP FILTRI FRANCE
Tel: +33.1.40-86-47-00
Fax: +33.1-40-86-47-09
Email: contact@mpfiltrifrance.com
Website: www.mpfiltri.com

INDIA

MP FILTRI INDIA
Tel: +91 9945599899
Email: s.mishra@mpfiltri.com
Website: www.mpfiltri.com

RUSSIAN FEDERATION

MP FILTRI RUSSIA INC
Phone mobile: +7.095-502-5411
Fax: +7.095-205-9410
Email: mpfiltrirusia@yahoo.com
Website: www.mpfiltri.ru

USA

MP FILTRI USA Inc.
Tel: +1.215-529-1300
Fax: +1.215-529-1902
Email: sales@mpfiltriusa.com
Website: www.mpfiltriusa.com

UAE

MP FILTRI UEA
Tel: +91 9945599899
Email: s.mishra@mpfiltri.com
Website: www.mpfiltri.com